



XRY

## Turn data into actionable intelligence, faster

- **Unlock:** Access critical data from locked and encrypted mobile devices
- **Extract:** Ensure comprehensive data extraction with full chain-of-custody integrity
- **Decrypt:** Decrypt encrypted apps, messages, and files to uncover the full picture

Successful investigations start with fast, reliable access to high-quality data from mobile devices. Without dependable digital evidence, even the most determined efforts can fall short.

XRY delivers powerful, intuitive, and efficient mobile data extractions. It enables both forensic experts and frontline users to recover more critical data in less time, all while maintaining full evidential integrity.

Welcome to **XRY** - the fastest, most trusted way to recover the digital evidence that matters most.

Across the globe, people rely on mobile devices every day - creating a constant stream of potential digital evidence. In today's investigations, access to that evidence is often the key to uncovering the truth. But digital forensic evidence must be extracted quickly, and forensically sound. When it's not, investigations can be delayed, evidence can be challenged, and offenders can walk free.

That's why the XRY suite is at the core of the MSAB portfolio.

Designed to evolve with the fast-paced world of mobile technology, XRY products are continuously enhanced to help you unlock more devices, extract more data, decrypt critical digital evidence - faster and more efficiently.



### MORE DEVICES SUPPORTED THAN EVER

Handle virtually any device that comes your way with support for a wide and growing range of device profiles



### ADDED PASSCODE & BYPASS FEATURES

Unlock more evidence faster with capabilities that help you access even the toughest devices.



### BETTER APPLE SUPPORT

Enhanced compatibility with the latest iOS versions and full decoding support for tools like Inseyets, Graykey, and Oxygen. *Contact your sales representative to learn more.*



### BEST SUPPORT FOR CHINESE CHIPSETS

Offers improved support for the Chinese chipsets used in many popular low-cost feature phones like MTK, Spreadtrum, Coolsand & Infineon.



### ACCESS MORE APPS

Ongoing support for the most used apps including Facebook, WhatsApp, Viber, and Instagram with updates in every XRY release.



### ENHANCED BROWSER SUPPORT

Access even more browsing history from Apple Safari, Google Chrome, Opera, and other popular web browsers.



### BETTER LOCATION DATA REPORTING

Easily correlate data from multiple sources to uncover clearer movement patterns and timelines.



### PRE-INDEXATION

Saves you time by pre-indexing extracted files for **XAMN Pro**, giving you a head start on your analysis.

- ✓ Broad device compatibility
- ✓ Advanced passcode & bypass capabilities
- ✓ Comprehensive App data extraction
- ✓ Allows simultaneous multi-device extractions
- ✓ Secure, court-ready reporting
- ✓ Frequent software & hardware updates
- ✓ Full audit trail
- ✓ Best-in-Class App support
- ✓ Microsoft-Certified USB drivers

## Who is XRY for?

### FORENSIC SPECIALIST

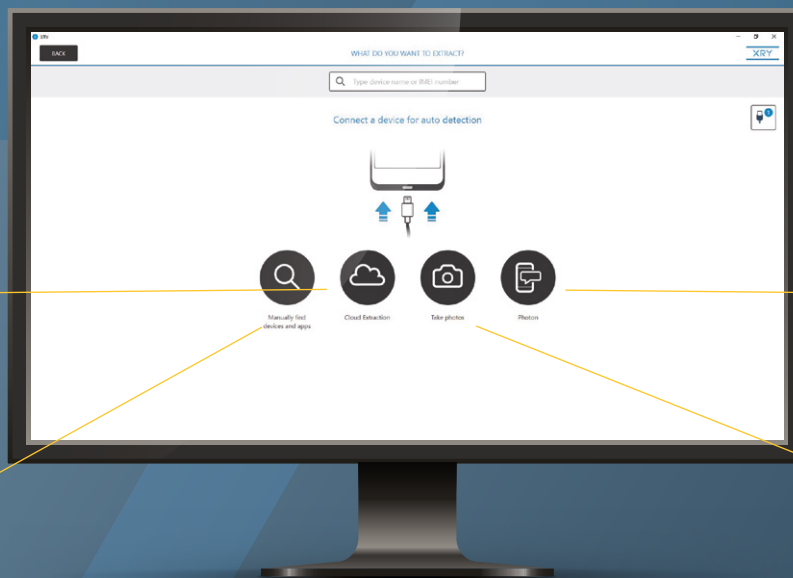
XRY helps you speed up investigations while maintaining forensic integrity. With broad device support and seamless integration across MSAB tools, your workflow stays efficient and reliable.

### FIELD OR FRONTLINE USER

Start investigations immediately - no need to wait for the lab. XRY lets you access critical data on the spot, helping you make faster decisions and take timely action.

### MANAGER

XRY is a court-trusted solution that ensures the integrity of digital evidence from extraction to reporting. With **XEC Director**, you get full oversight and operational efficiency. And with industry-leading training and support, your team stays sharp, confident, and ready for any case.



**XRY Cloud**  
Data from connected cloud-based services can be extracted and recovered.

**Search**  
All types of data, from a wide array of devices and apps, can be extracted and recovered.

**XRY Photon**  
Recover text messages and images from popular third-party Apps.

**XRY Camera**  
Supporting picture and video evidence can be gathered.

 Ready to accelerate your investigations? Contact our team at [sales@msab.com](mailto:sales@msab.com).

# XRY

## Pro

## Our most advanced extraction and decryption tool

**XRY Pro** is MSAB's most advanced extraction tool, designed for experienced forensic practitioners who regularly face locked and highly secure devices. Leveraging cutting-edge, proprietary exploits and brute-force techniques, **XRY Pro** gives you the ability to access devices that standard tools cannot reach. Whether you prefer an unlimited license or a token-based system, **XRY Pro** can be tailored to fit your workflow and existing mobile forensic setup.

With mobile device security constantly evolving, **XRY Pro** ensures you stay ahead by offering premium access to high-value data while maintaining full chain of custody. Used on-site by your own trained staff, it supports your internal policies and procedures.

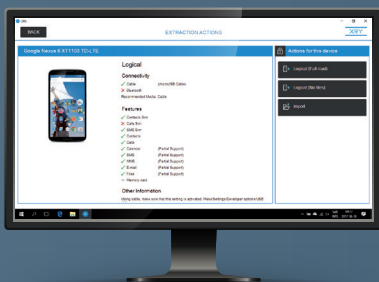
To get the most from **XRY Pro**, we strongly recommend the on-demand training course. Note: Current XRY certification is required for eligibility.

### Product Highlights

- Leverage the latest brute-force and extraction exploits
- Support for FDE, FBE, and Secure Startup encryption
- Bypass passwords on AFU (After First Unlock) devices
- Brute-force locked BFU (Before First Unlock) devices
- Advanced brute-force tools for complex passwords
- Extract and analyze mobile RAM data

### Features

- Unique brute-force and extraction exploits
- Tailored techniques for bypassing security measures
- Windows-based software solution for seamless integration
- Step-by-step instructions for all supported solutions
- Fast and easy data extraction and reporting workflows
- Secure proprietary file format for data integrity



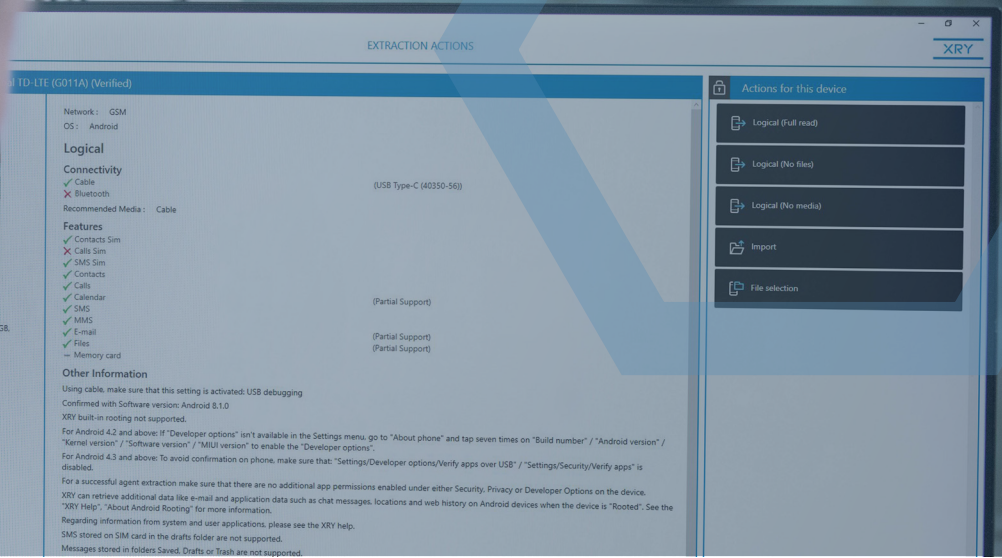
### Minimum Specifications:

Intel 8th Generation (Core i3 or above) processor, 16GB RAM, 1 USB-port  
20 GB space for installation  
500 GB space for data storage  
Windows 10/11  
1920 x 1080 resolution

For the full list of recommended specifications, see [MSAB.com/XRY](https://www.msab.com/XRY)

# XRY

## Logical



# The ideal entry point for forensic investigators

**XRY Logical** is the fastest way to access and recover live and file system data directly from a mobile device. It communicates with the device's operating system to extract data with full forensic integrity.

**XRY Logical** features an intuitive interface that simplifies the extraction process without compromising on quality or security. You can perform multiple types of examinations - logical extractions, SIM card reads, and SD card analysis - and store them together under a single, tamper-proof XRY file that can be customized to meet your organization's needs. While the built-in Device Manual provides clear guidance on what data can (and cannot) be recovered from each device, setting accurate expectations from the start.

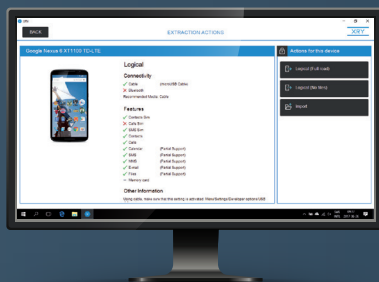
**XRY Logical** is the ideal entry point for forensic investigators. It runs on Windows-based systems and includes all the necessary hardware to get started.

## Product Highlights

- SIM Card data extraction
- Logical examinations of mobile devices
- Triage profiles for rapid assessment
- Fast recovery of mobile data
- Comprehensive smartphone App support

## Features

- Device-specific guidance
- Multiple hash algorithm options
- Windows-based software solution for seamless integration
- Fast and easy data extraction and reporting workflows
- Secure proprietary file format for data integrity



## Minimum Specifications

Intel 8th Generation (Core i3 or above) processor, 16GB RAM, 1 USB-port  
20 GB space for installation  
500 GB space for data storage  
Windows 10/11  
1920 x 1080 resolution

For the full list of recommended specifications, see [MSAB.com/XRY](https://www.msab.com/XRY)

# XRY

## Physical

## Unlock deeper access to hidden and deleted data

**XRY Physical** gives forensic specialists the power to go beyond the operating system and extract raw data directly from a device's internal memory. This advanced method allows you to access system files, protected data, and even deleted data - helping you bypass security and encryption barriers on locked devices.

With **XRY Physical**, you can uncover hidden data suspects don't want you to find. Generate hash values for both the full memory image and individual decoded files to ensure forensic integrity. And with **XAMN Pro**, you can quickly view hex code and verify original raw data using source mode.

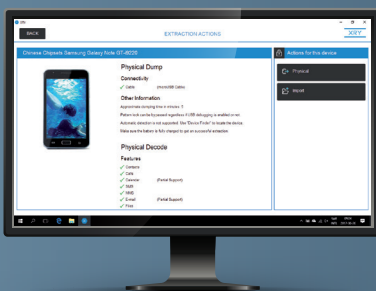
**XRY Physical** is the next-level tool for investigators who need deeper access to mobile data. It's the ideal upgrade for those who need to take their forensic capabilities further.

### Product Highlights

- Perform full physical examinations of mobile devices
- Bypass or recover device passcodes to access locked data
- Recover deleted and reconstructed data from internal memory
- Import and analyze full device dumps and binary files
- Extract data from supported smartphone apps

### Features

- Device-specific guidance
- Multiple hash algorithm options
- Windows-based software solution for seamless integration
- Fast and easy data extraction and reporting workflows



### Minimum Specifications

Intel 8th Generation (Core i3 or above) processor, 16GB RAM, 1 USB-port  
20 GB space for installation  
500 GB space for data storage  
Windows 10/11  
1920 x 1080 resolution

For the full list of recommended specifications, see [MSAB.com/XRY](https://www.msab.com/XRY)



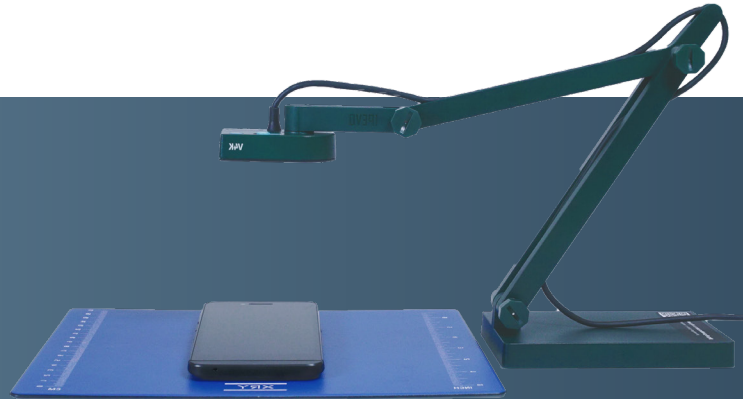
# Add valuable visual evidence to your case

**XRY Camera** gives you the ability to capture photos and videos of mobile devices - adding valuable visual evidence to your case. Whether it's a smudge pattern on the screen, a unique device identifier, or the IMEI sticker hidden under the battery, sometimes a photo is the most reliable way to capture critical device details. Use **XRY Camera** to support your XRY reports with real-world visuals, validate extraction results with screenshots, and add examiner notes in real time to strengthen your case.

All images are securely stored within the XRY case file, maintaining the chain of custody from start to finish. **XRY Camera** is a separate hardware-based solution and requires its own license.

## Product Highlights

- Capture pictures and video via XRY
- Preview before saving to ensure accuracy
- Organize images into relevant categories
- Securely embed images into XRY case reports
- Validate extractions with screenshots as supporting evidence



# Extend reach beyond the physical evidence

**XRY Cloud** allows you to recover valuable data stored in connected cloud services. This is useful for accessing social media content, app-based communications, and other online data that may not be stored locally. Smartphone apps often use credential tokens saved on the device to verify user identity. **XRY Cloud** leverages these tokens to access cloud-based data from services like Facebook, Google, iCloud, Twitter, Snapchat, WhatsApp, Instagram, and more. You can recover cloud data in two ways:

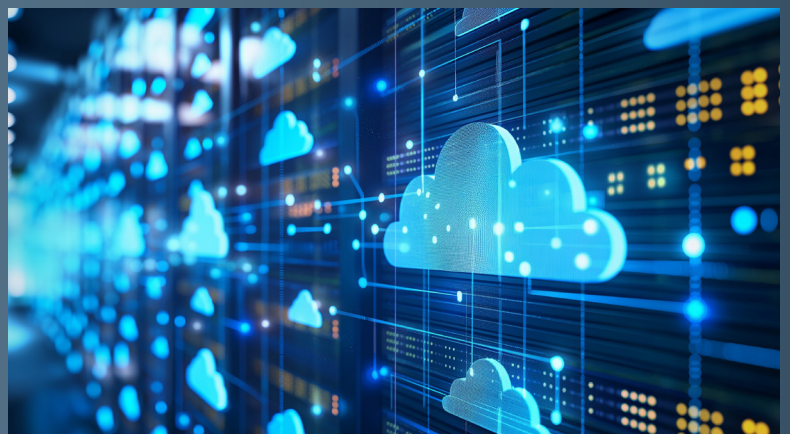
**Automatic mode:** Extract app tokens during a standard XRY smartphone extraction when the device is in your possession. These tokens help locate and recover associated cloud data.

**Manual mode:** Recover cloud data without the device by entering login credentials (user ID and password) obtained from other sources.

All data is recovered in a forensically sound manner and integrated into your XRY case file. **XRY Cloud** is a separate component within the XRY software and requires its own license.

## Product Highlights

- Automatic & Manual extraction modes
- Seamless integration with XRY reports
- Retrieve valuable evidence from leading cloud services



# About MSAB

MSAB is a global leader in digital forensic technology for mobile device examination and analysis.

The flagship extraction software, XRY, has been used by authorized investigators to quickly and effectively retrieve data from mobile phones since 2003.

As an MSAB customer, you will be part of a training and support program that constantly keeps your organization updated on the latest developments in mobile forensics and MSAB solutions. MSAB also supports its customers in the development of their own mobile forensic strategies. Tailored solutions are available upon request.

Learn more about MSAB, its products, and its solutions at [MSAB.com](https://www.msab.com).

# MSAB

Trusted Partner in Digital Forensics